



User manual wind and sun sensor MOBILUS S-WL

 **READY**

MOBILUS MOTOR Spółka z o.o.
ul. Miętowa 37, 61-680 Poznań, PL
tel. +48 61 825 81 11, fax +48 61 825 80 52
VAT NO. PL9721078008

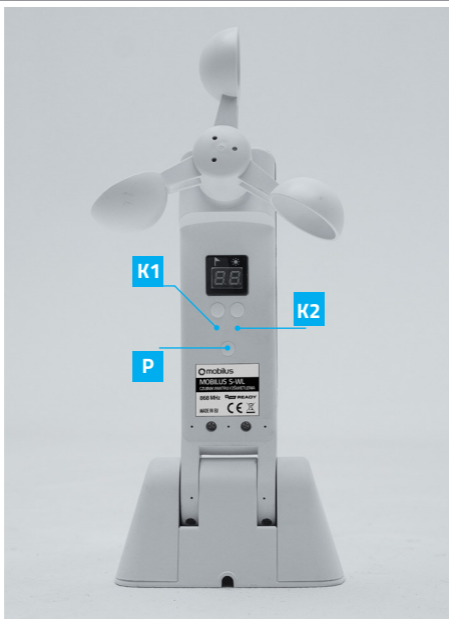
1. GENERAL INFORMATION

The MOBILUS S-WL sensor is used to monitor wind strength and sunlight. Every gust of wind and light intensity level is recorded, thanks to which you will gain additional automation of your covers (e.g. awning, façade blinds).

- 7 levels of wind sensitivity.
- 7 levels of sunlight intensity.
- One-way radio communication.

Please read the user manual, which informs you how to use the device safely. The user is solely responsible for any resulting damages from using the device in a manner inconsistent with its intended purpose. The manufacturer accepts no liability for personal or property damage caused by improper use, operation and commissioning.

2. DESCRIPTION OF SENSOR COMPONENTS



- K1** Wind sensor section control button.
K2 Light sensor section control button.
P PROGRAMMING MODE button.

- 1** Solar panel.
2 Kielich czujnika wiatru.

2. DESCRIPTION OF SENSOR COMPONENTS



3. PACKAGE CONTENTS

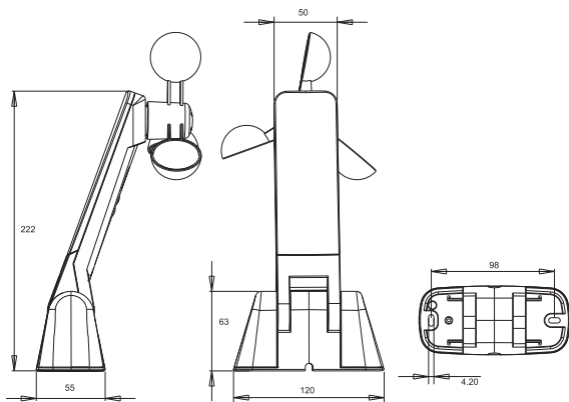
The package contains the following items:

- MOBILUS S-WL sensor.
- User manual.

4. TECHNICAL PARAMETERS

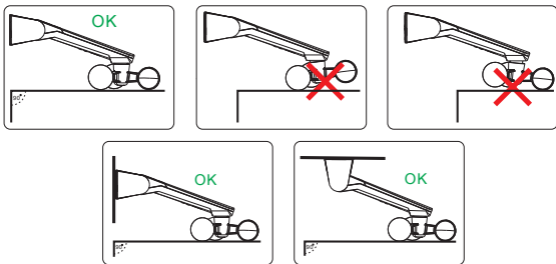
- Detection of wind speed and light intensity.
- One-way communication COSMO | 2WAY READY.
- Degree of protection: IP44.
- Power supply: built-in solar panel and lithium battery (3.7V, 180mAh).
- Operating temperature: -20°C to 60°C.
- LED segment display.
- Dynamic code.
- 868MHz.
- Dimensions: 22 x 120 x 55 mm.

5. DIMENSIONS



6. INSTALLATION

Make sure that after attaching the sensor to the surface, the wind cups are parallel to the horizontal surface as shown in the installation drawing. Incorrect installation may affect the accuracy of the recorded wind speed.



7. FIRST START

Before using it for the first time, expose the device to direct sunlight to charge the battery. The device should be installed so that:

1. Ensure the operation of the photovoltaic cell, which is responsible for charging the internal battery that powers the device.
2. Ensure that the device is located in such a way that it will enable correct readings of wind or light intensity.

To wake up the device, press any button. After activation, the current settings will appear on the LCD display.

8. CURRENT DEVICE SETTINGS

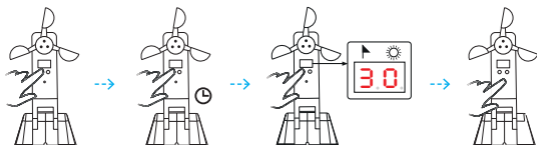
1. In the factory configuration, the device has sensors disabled - the screen displays the status 00.



2. To change the setting, activate the screen, then hold down one of the K1 or K2 keys until the appropriate fields start flashing - for K1, the area on the left, for K2, on the right.

Wind sensor setting (K1 button)

1. To change the setting, activate the screen with any button.
2. Hold down the K1 key until the number on the left starts flashing.
3. Press the K1 keys to change the values in the loop from 0 to 7 for the wind sensor section.
4. The change should be confirmed with the P key.



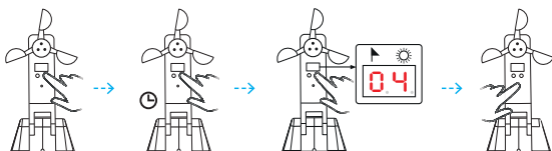
Setting	Beaufort scale	km/h
1	4	18
2	5	28
3	6	38
4	7	49
5	8	61
6	9	74
7	10	88

After exceeding the set value:

A raise command is sent to the device connected to the wind sensor.

Light sensor setting (K2 button)

1. To change the setting, activate the screen with any button.
2. Hold down the K2 key until the number on the left starts flashing.
3. Press the K2 keys to change the values in the loop from 0 to 7 for the wind sensor section.
4. The change should be confirmed with the P key.



8. CURRENT DEVICE SETTINGS

Setting	Lux
1	10
2	100
3	1k
4	10k
5	20k
6	50k
7	100k

After exceeding the set value:

A leave command is sent to the device connected to the light sensor.

9. PROGRAMMING - CONNECTING WITH THE RECEIVER

To connect the WIND or LIGHT SENSOR to the receiver (blind, roller shutter, power switch), follow these steps.

1. Activate the sensor with any key.
2. Hold down the P button until two red dots appear at the bottom of the numbers on the display.



The digits in this mode show the current readings of the corresponding sensors and may change.

3. Using the MASTER REMOTE, enter the receiver into PROGRAMMING MODE according to its instructions, and then press the key - depending on what the device is to be controlled - K1 wind or K2 light. The dot next to a given field will disappear for a moment - the devices will be paired.
4. Press the P button again to exit PROGRAMMING MODE.
5. Exit PROGRAMMING MODE on the controlled device.



GUARANTEE

The manufacturer guarantees the operation of the device. It also undertakes to repair or replace a damaged device if the damage results from defects in materials and construction. The warranty is valid for 24 months from the date of sale, subject to the following conditions:

- The installation was performed by an authorized person, in accordance with the manufacturer's recommendations.
- The seals were not broken and no arbitrary structural changes were made.
- The device was used as intended in accordance with the operating instructions.
- The damage is not the result of improperly constructed electrical installation or atmospheric phenomena.
- The manufacturer is not responsible for damage resulting from improper use and mechanical damage.
- In the event of a failure, the device must be sent for repair together with the proof of purchase.

Defects discovered during the warranty period will be removed free of charge within no more than 14 business days from the date of acceptance of the device for repair. Warranty repairs are performed by the manufacturer MOBILUS MOTOR Sp. z o. o.

If you have any questions, please contact the seller (please provide the following information: description of the event, error, conditions in which the failure occurred).

MAINTENANCE OF THE DEVICE

1. To clean the device, use a soft cloth (e.g. microfiber) moistened with water. Then wipe the device dry.
2. Do not use chemicals.
3. Avoid using in dirty and dusty rooms.
4. Do not use the device at temperatures higher or lower than the declared range.
5. Do not open the device - under penalty of losing the warranty.
6. The device is sensitive to dropping and throwing.

ENVIRONMENTAL PROTECTION



This device is marked in accordance with the WEEE Directive (2002/96/EC), regarding waste electrical and electronic equipment. By ensuring correct disposal, you contribute to reducing the risk of the product having a negative impact on the environment and human health, which could occur if the device was disposed of incorrectly.

The symbol on the product or the documents attached to it means that this product is not classified as household waste. The device must be taken to an appropriate waste collection point for recycling. For further information about recycling this product, please contact your local authority, waste disposal service provider or the store where you purchased the product.