



User manual of COSMO | G3+ Lite controller.

www.mobilus.pl
Wersja 1.3ENG, 250404

1. GENERAL INFORMATION

COSMO | G3+ Lite is a 4-channel remote control, designed for remote control receivers brand MOBILUS (radio remote controls for roller shutters, awnings, blinds / control modules for motors without radio communication module / ON / OFF modules).

- Support of 4 channels.
- Support 4 channel groups.

Please refer to the instruction manual that tells how to safely use the device. You are solely responsible for any damages resulting from the using the device in a manner inconsistent with its intended purpose. The manufacturer accepts no responsibility for damage or injury caused by misuse, improper handling and running.

2. CONTENTS OF THE PACKAGE

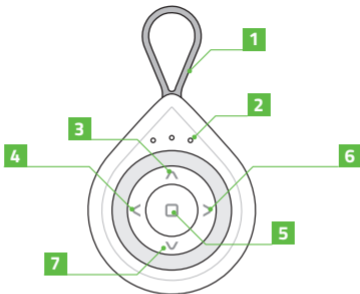
The packaging contains the following items:

- remote **COSMO | G3+**,
- 1 CR2450 3 V battery in remote,
- user manual.

3. TECHNICAL PARAMETERS

- Protocol radio: COSMO | 2WAY READY - one-directional communication
- 4 channels remote
- Dynamic code
- FSK modulation
- 868 MHz
- Bi-directional communication
- 1 CR2430 3 V
- Dimensions: 75 x 45 x 14 mm / waga: 30 g

4. DESCRIPTION OF THE REMOTE CONTROL



1. Pendant.
2. LED's indicating the selected channel.
3. Control button **UP** (**TURN ON** for modules **ON/OFF**).
4. Navigation channels button **LEFT**.
5. **STOP** button (**TURN ON/TURN OFF** for modules **ON/OFF**; **UP/STOP/DOWN** in case of the modules operating in steps mode).
6. Navigation channels button **RIGHT**.
7. Control button **DOWN** (**TURN OFF** for modules **ON/OFF**).

5. POWER SUPPLY

The device is powered by single battery **CR2430**. In order to change the battery, open housing of the remote.

1. Between the lower and the upper part of the housing slide flat, rigid tool in the position shown in Fig. 4a.
2. Then, slowly and firmly spread apart the two housing parts - Fig. 4b.
3. In the lower part of the housing is a battery holder CR2430 3 V - Fig. 4c.
Replace the old battery with a new one, pay attention to the polarity.
4. Close the remote control.

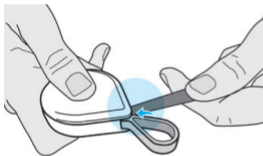


Fig. 5a

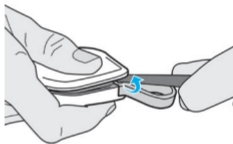


Fig. 5b

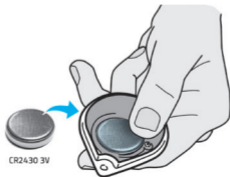


Fig. 5c

6. READING OF REMOTE INTO THE MOTOR'S MEMORY

WARNING! Do not program the remote control when the shutter is in the extreme position (top or bottom). Each program and changes of motor's operation directions are confirmed by two micro-movements of the driver.

Failure to comply with these rules may result in damage the blinds (inhaled by the housing).

1. Press the **LEFT / RIGHT** to select the appropriate channel.



Fig. 6.1

2. Enter **MOBILUS motor, serie R** in the **PROGRAMMING MODE OF MASTER REMOTE**:
 - press for 5 seconds **PROGRAMMING BUTTON** in the motor - Fig. 6.2a;
 - or double turn off and turn on the power supply of the motor - Fig. 6.2b;The confirmation of properly performed operation will be two micro-movements of the motor driver - Fig. 6.2c.

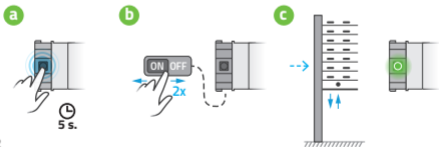


Fig. 6.2

WARNING! The first remote control readed into the receiver is a remote control **MASTER**. It allows you to operate motor and enter it in the **PROGRAM MODE OF OTHER REMOTES**.

C.D. 6. W CZYTYWANIE PILOTA DO PAMIĘCI SIŁOWNIKA

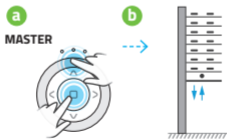
3. On the remote control simultaneously press the **STOP** and **UP** - Fig. 6.3 . Hold the buttons until the motor driver will perform two micro-movements. The remote control has been readed into the motor.



Fig.6.3

7. READING IN OTHER REMOTE

1. On the **MASTER** remote control simultaneously press the **STOP** button and **UP** - Fig. 7.1a. Hold the buttons until the motor driver will perform two micro-movements confirming the input of the motor in the PROGRAM MODE.



rys. 7.1

2. On the second remote control, you want to program, press the **STOP** and **UP** - Fig. 7.2a. Hold the buttons until the motor driver will perform two micro-movements - Fig. 7.2b. Another remote was loaded into the motor.

7. READING IN OTHER REMOTE

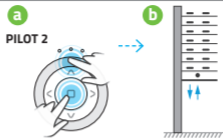


Fig. 7.2

Within 20 sec. you can proceed to load the next remote. However, if no action of programming at this time doesn't happen, motor automatically returns to the OPERATING MODE. You can expedite return to the OPERATING MODE manually using the remote control MASTER. In this case, press the button on the **STOP** and **UP** and hold more than 5 seconds. In both cases, return to the OPERATING MODE will be confirmed by two micro-movements of the driver.

8. CHANGE OF MOTOR'S OPERATION DIRECTION

After loading the remote control to the motor check that the buttons UP and DOWN correspond to lifting and lowering the blinds - Fig. 8a. If not, press simultaneously buttons STOP and DOWN and hold them for about 5 seconds on the remote control any loaded to the motor. The confirmation of correctly performed operation are two micro-movements of the driver - Fig. 8b. The motor changes the direction of the work on the correct - Fig. 8c.



Fig.8

8. CHANGE OF MOTOR'S OPERATION DIRECTION

WARNING! You can change the direction of the work of motor for MOBILUS drives with electronic limit switches only before setting the upper and lower limit switches. You can change the direction of work for the MOBILUS motors with mechanical limit switches at any time.

9. TRANSMISSION PROTOCOL SWITCHING COSMO - COSMO | 2WAY

Remote control COSMO | G3+ Lite works in latest version of radio communication COSMO | 2WAY READY. If you need to change the mode to an older version (for example, if you purchase a new remote control for older COSMO radio tubular motors), follow these instructions:

1. Activate the remote control.
2. At the same time, press the STOP and RIGHT buttons for 20 seconds.
3. The LEDs in the lower part of the front panel shall light up indicating:
 - ● ● - the latest radio communication COSMO | 2WAY READY
 - ● ● - previous communication COSMO



Fig. 9

10. ENVIRONMENTAL PROTECTION



This appliance is marked according to the European Directive on Waste Electrical and Electronic Equipment (2002/96/EC) and further amendments. By ensuring this product is disposed of correctly, you will help to prevent potential negative consequences for the environment and human health, which could otherwise be caused by inappropriate waste handling of this product. The symbol on the product, or the documents accompanying the product, indicates that this appliance may not be treated as household waste. It shall be handed over to the applicable collection point for the waste electrical and electronic equipment for recycling purpose. For more information about recycling of this product, please contact your local authorities, your household waste disposal service or the shop where you purchased the product.



MOBILUS MOTOR Spółka z o.o.

Wersja 1.3ENG, 250404

ul. Miętowa 37, 61-680 Poznań, PL

tel. +48 61 825 81 11, fax +48 61 825 80 52

VAT NO. PL9721078008

www.mobilus.pl