

User Manual of MOBILUS C-MR BT  
external receiver



Works with  
**Apple Home**

## 1. CONNECTING THE ADDITIONAL SWITCH / DRIVER

Wiring diagram of the module without a key switch - Fig. 1.1. It is possible to connect an external keyboard connector (without support) - Fig. 1.2, bell connector - Fig. 1.3, control via a controller with relay output - Fig. 1.4. They must be connected according to the attached diagram.

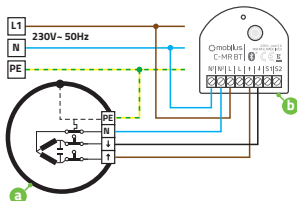


Fig. 1.1

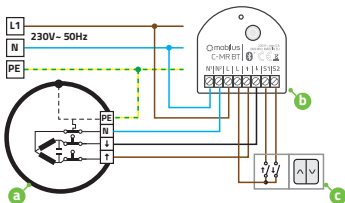


Fig. 1.2

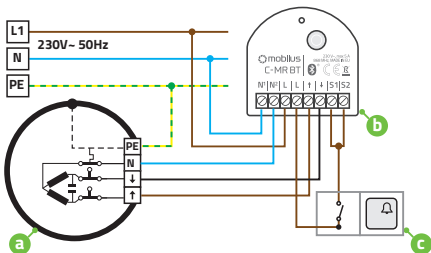


Fig. 1.3

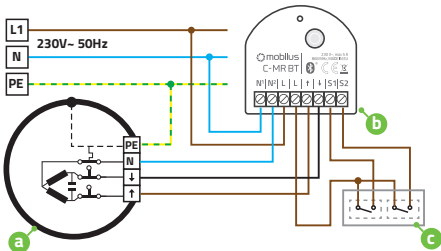


Fig. 1.4

## 2. INTEGRATION WITH APPLE HOMEKIT

1. Make sure the accessory is turned on and nearby. The module will work properly with a roller shutter that has end positions set.
2. On your iOS phone, open the Apple Home app, then press the "+" in the top corner of the screen to add a new accessory.
3. Scan the HomeKit setup code (QR code) or, if you cannot scan it, select , I do not have or cannot scan the code" and enter the 8-digit code.
4. After correctly entering the code, the window for adding the device to the house will appear. After successful connection with the module, assign the device to the room in which it is located and give it a name.

**NOTE** Integration with the Apple HomeKit system will enable voice control of devices using the Siri voice assistant.

## 3. MODULE SOFTWARE UPDATE

To update the module, download the MOBILUS BT app from the AppStore.

**The MOBILUS BT app will automatically search for all MOBILUS BT modules within the Bluetooth range of your smartphone.**

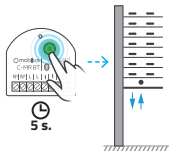


1. In the MOBILUS BT application, press on the device panel to open SETTINGS.
2. Select the SOFTWARE UPDATE item, and then check the availability of the new software version of the device.

## 4. ENTRY INTO THE MODULE PROGRAMMING MODE

Press and hold a programming button on module **MOBILUS C-MRBT** above 5 sec until the connected actuator executes one sequence of noticeable and audible micro movements down / up confirming the entrance of the receiver in the **PROGRAMMING MODE**.

**WARNING!** *If within 20 seconds no programming will be performed, the MOBILUS C-MRBT radio module automatically exits from the programming mode. Connected actuator executes one sequence of noticeable and audible micro movements down / up.*



## 5. RESETOWANIE MODUŁU DO USTAWIEŃ FABRYCZNYCH

1. Enter the **PROGRAMMING MODE** for the **MOBILUS C-MRBT** module - Fig. 5a.
2. In the **PROGRAMMING MODE**, press and hold the programming key above 5 seconds - Fig. 5b. The module is removed from the HomeKit network and all remote controls previously loaded into the module are deleted from its memory, as confirmed by a single white LED flash.

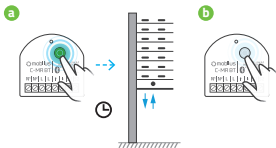


Fig. 5

## 6. CHANGE THE DIRECTION OF OPERATION OF THE ACTUATOR BY SWAPPING WIRES

1. If you press the UP direction button in the application, and the armor goes DOWN, you need to change the direction of rotation of the drive. To do this, swap the order of the UP and DOWN wires - Fig. 6a.

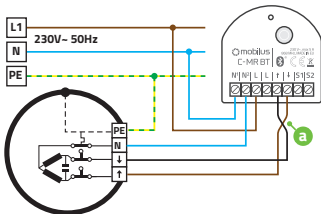


Fig. 6

## 7. CHANGING THE MODULE'S OPERATING MODE

**ATTENTION!** The module works in roller shutter mode by default, but you can change its mode of operation to support lighter material roller shutters such as screens.

### Roller shutter operation mode:

1. Press the button on the module 3 times - the module will give 2 beeps and enter the roller shutter operation mode- Fig. 7a.

**Screen operation mode:**

1. Press the button on the module 3 times - the module will beep 1 time and enter screen handling mode- Fig. 7b.

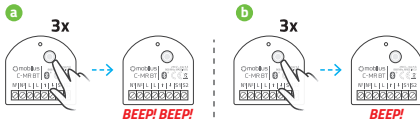


Fig. 7

## 8. CHANGING THE MODE OF OPERATION OF THE CONTROL BUTTONS

The MOBILUS C-MRBT module allows you to change the operating mode of the control buttons.

- I. **MODE WITH HOLD UP** - Pressing the key causes the roller shutter to be lowered or raised.
- II. **MODE WITHOUT HOLD UP** - Lowering or raising the controlled roller shutter continues as long as the control key is pressed.

To change the operation mode of the control buttons:

1. Enter the module into PROGRAMMING MODE - Fig. 8a.
2. On the switch, press the DOWN button - Fig. 8b. The module will go into non-supported mode. Repeating the procedure will cause the module to go into a sustained mode.

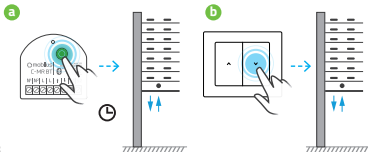


Fig. 8

## 9. ENABLE / DISABLE OVERLOAD DETECTION

**MOBILUS C-MRBT** transmits information to remotes about overload - for example, it may be related to a housing lock occurring at the time of raising or lowering. Mode is factory-sett - it is possible to turn off.

To do so:

1. Enter the module into PROGRAMMING MODE - Fig. 9a.
2. On the switch, press the UP button - Fig. 9b. Overload detection is disabled, to restore this function the procedure must be repeated.

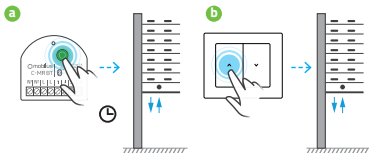


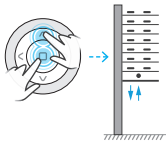
Fig. 9



## OPERATING THE MODULE WITH THE COSMO REMOTE CONTROL

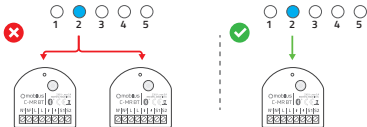
### 1. LOADING THE MASTER-A \* CODE TO THE RECEIVER MEMORY

1. Enter the **MOBILUS C-MRBT PROGRAMMING MODE**.
2. Press and hold the **STOP** and **UP** buttons simultaneously on the remote control until the connected actuator executes one sequence of noticeable and audible micro movements down / up. The **MASTER-a** code has been loaded into memory and the module goes to the **WORK MODE**. Now, with the **MASTER** remote control, you can operate the units or enter the **PROGRAM MODE** to load more remote controls.



**WARNING** In the case of a multi-channel remote control select only one channel to be **MASTER**.

**NOTE** For the convenience of programming, it is recommended that each **COSMO | C-MRBT** module had its own separate **MASTER** (remote control (separate channel for multi-channel remotes). Avoid situations where several **COSMO | C-MRBT** modules remote controls will have common **MASTER** (shared channel).



**\*MASTER** - remote control or channel (in the case of a multi-channel remotes) loaded first into the memory of the **MOBILUS C-MRBT** module. Allows you to program further remote controls.

## 2. PROGRAMMING OF THE SECOND AND EVERY OTHER REMOTE CONTROL

1. On the **MASTER** remote control, simultaneously press and hold the **STOP** and **UP** until the connected actuator executes one sequence of noticeable and audible micro movements down / up confirming the entrance of the receiver in the **PROGRAMMING MODE** - Fig. 2a.
2. On the second remote control (for the multi-channel remote control, select the channel you want to program), press and hold both **STOP** and **UP** buttons simultaneously, until the connected actuator performs one sequence of noticeable and audible micro movements down / up. The remote (channel) was loaded into the receiver's memory - Fig. 2b.

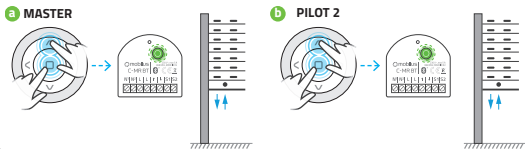


Fig. 2

Repeat step 2 to load the next remote control. If, however, no programming operation is started within 20 seconds, the module automatically returns to operating mode. Return to operating mode can also be performed manually using **MASTER**. In such a situation, press and hold the **STOP** and **UP MASTER** buttons. In both cases, the return to operating mode will be confirmed by a single sequence of micro movements down / up of the connected actuator.

### 3. REMOVAL OF INDIVIDUAL REMOTES (CHANNELS)

It is possible to delete only one of the programmed remotes (not for MASTER remote). To do this:

1. On the **MASTER**, press simultaneously and hold the **STOP** and **UP** buttons until the connected actuator executes one sequence of noticeable and audible micro movements down / up, confirming the receiver's entrance into the programming mode - Fig. 3a.
2. On the remote control (channel) that you want to delete, press and hold the **STOP** and **UP** buttons simultaneously until the connected actuator performs one sequence of noticeable and audible micro movements down / up, confirming the removal of the pilot code from the actuator memory - Fig. 3b.



Fig. 3

**WARNING!** Repeat step 2 to proceed to remove the next remote control. However, if within 20 sec. no programming operation is started, the receiver automatically returns to operating mode. Return to operating mode can also be performed manually using the **MASTER**. In such a situation, simultaneously press and hold the **STOP** and **MASTER** buttons until the connected actuator executes one sequence of noticeable and audible micro movements down / up. In both cases, the return to operating mode will be through one sequence of micro down / top moves of the connected actuator.

## 4. CHANGING THE DIRECTION OF THE TUBULAR MOTOR

1. If you press the **UP** button on the remote control and the armor goes down, change the direction of rotation of the drive. At the same time, press and hold:
  - a) on the remote control **COSMO** | **HM**, | **HB**, | **G3+**, | **WT9**, | **WT** buttons **STOP** and **DOWN** - Fig. 4b;
  - b) on the remote control **COSMO** | **HT**, | **H24**, | **H1**, | **H5**, | **G**, | **W1**, | **W7** buttons **DOWN** and **UP** - Fig. 4c;
  - c) on the remote control **COSMO** | **HCT UP** and **F3** buttons - Fig. 4d;until the drive executes one sequence of micro down / up moves.
2. Check the **UP** / **DOWN** buttons - Fig. 4e.

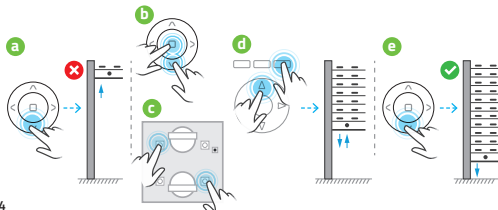


Fig. 4

## 5. REPEATER FUNCTION

**SIGNAL REPEATER** - This feature allows you to expand the radio control area. The **MOBILUS C-MRBT** module with the repeater function enabled receives signals from the controller or actuators and passes them forward. Thanks to the furthest located receivers which are not within the controller can receive and transmit information through modules located indirectly. Turn on the repeater function:

1. Press the **STOP** and **UP** buttons simultaneously on the **MASTER** until the connected actuator executes one sequence of noticeable and audible micro movements down / up, confirming entry into the **PROGRAMMING MODE**.

## CONT. 5. REPEATER FUNCTION

- On the remote control, press the button sequence: **UP, STOP, DOWN, UP, STOP, DOWN**. Activation of the repeater function will cause three sequences of **DOWN-UP** micro-movements by the actuator.
- Repeat step 1 to deactivate the repeater function. Then press the button sequence: **UP, STOP, DOWN, UP, STOP, DOWN** - confirmation of deactivation is the execution of two sequences of micro-**DOWN-UP** movements by connected tubular motor.

**WARNING!** Turn on the repeater function only on devices that are within range of the signal range. Because of the efficient work, we recommend that you enable the signal repeater function on up to three devices in the facility. Unreasonable inclusion of signal repeater on many devices may cause interference in all radio equipment.

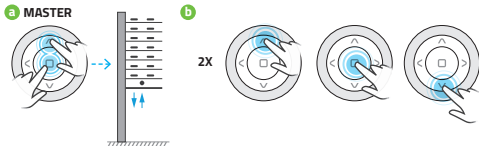


Fig. 5

## 6. BIDIRECTIONALITY

**MOBILUS C-MRBT** with two-way communication with the remote control allows control of the state of shutter position ( eg. open, closed, intermediate level, overload detection ).

Proper operation of bidirectional communication requires the use of pilots with bidirectional communication.

Remote controls supporting two-way communication: **MOBILUS COSMO | HCT, COSMO | G3+, COSMO | HM, COSMO | HB, COSMO | WT9, COSMO | WT.**

## 7. BIDIRECTIONAL - INFORMATION ABOUT THE POSITION OF THE BLIND

**MOBILUS C-MRBT** transmits information about the end position and intermediate position blinds to remote controls. The mode is switched on automatically - there is no possibility of deactivation.

## 8. BI-DIRECTIONAL - OVERLOAD INFORMATION

**MOBILUS C-MRBT** transmits information to remotes about overload - for example, it may be related to a housing lock occurring at the time of raising or lowering. Mode is factory-setted - it is possible to turn off.

Enable / disable of overload detection:

1. At the **MASTER** remote control press and hold the **STOP** and **UP** buttons simultaneously until the connected actuator performs one sequence of noticeable and audible micro movements down / up confirming the receiver input into the programming mode - Fig. 8a.
2. On the **MASTER**, press the **STOP** button and hold until the actuator connected to the **MOBILUS C-MRBT** module will perform two sequences of noticeable and audible micro movements down / up. Overload detection active - Fig. 8b.
3. To stop the overload detection, repeat step 1. Then press the **STOP** button on the **MASTER** control and hold until the actuator connected to the **MOBILUS C-MRBT** module will perform 1 sequence of noticeable and audible micro moves down / up - Fig. 8c.

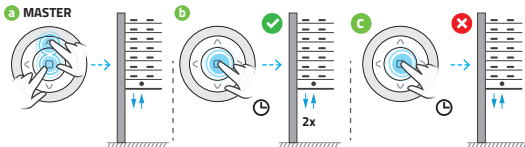
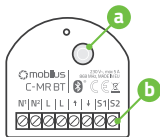


Fig. 8

## 9. PRODUCT DESCRIPTION



- a) Programming button;
- b) Connection terminals;

N<sup>1</sup> - neutral;

↑ - UP;

N<sup>2</sup> - neutral;

↓ - DOWN;

L - phase;

S1 - switch down;

L - phase;

S2 - switch up;

## IMPORTANT INFORMATIONS

- When unpacking the unit, make sure that there is no damage in the transport. If so, you should immediately inform the supplier.
- Read the operating manual carefully before use
- **MOBILUS C-MRBT** module should be powered by 230 V ~, 50 Hz. Its installation should only be carried out by persons with electrical qualifications according to the enclosed electrical diagram in accordance with all applicable regulations.
- **MOBILUS C-MRBT** modules are designed to work with smartphones and tablets supporting iOS 10.0 and above systems and with COSMO series remote controls.
- The range of the radio control is limited by regulations for maximum power of the remote control and the conditions of the installation of the equipment. When designing the location of the remote control, consider limiting the range to about 25m by 2 walls.
- Declaration of Conformity:  
We declare under our sole responsibility that the **MOBILUS C-MRBT** complies with the following European Directives:
  1. 2014/53 / EU RED Radio Directive;
  2. 2014/30 / EU Electromagnetic Compatibility Directive.
  3. 73/23/EWG Low Voltage Directive.



Works with  
**Apple Home**

Use of the Works with Apple HomeKit logo means that an electronic accessory has been designed to connect specifically to iPod touch, iPhone, or iPad, respectively, and has been certified by the developer to meet Apple performance standards. Apple is not responsible for the operation of this device or its compliance with safety and regulatory standards.

**MOBILUS MOTOR Spółka z o.o.**

ul. Miętowa 37, 61-680 Poznań, PL

tel. +48 61 825 81 11, fax +48 61 825 80 52

VAT NO. PL9721078008

Wersja 1.0ENG, 161124



[www.mobilus.pl](http://www.mobilus.pl)