



User Manual of MOBILUS C-MR IP44 external receiver

Wersja 1.0ENG, 210401

www.mobilus.pl

1. IMPORTANT INFORMATIONS

- When unpacking the unit, make sure that there is no damage in the transport. If so, you should immediately inform the supplier.
- Read the operating manual carefully before use
- **MOBILUS C-MR** module should be powered by 230 V ~, 50 Hz. Its installation should only be carried out by persons with electrical qualifications according to the enclosed electrical diagram in accordance with all applicable regulations.
- **MOBILUS C-MR** module is designed to work with all **COSMO / COSMO | 2WAY** series remote controls.
- The range of the radio control is limited by regulations for maximum power of the remote control and the conditions of the installation of the equipment. When designing the location of the remote control, consider limiting the range to about 20m by 2 walls.
- Declaration of Conformity:

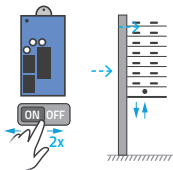
We declare under our sole responsibility that the **MOBILUS C-MR** complies with the following European Directives:

1. 2014/53 / EU RED Radio Directive;
2. 2014/30 / EU Electromagnetic Compatibility Directive.
3. 73/23/EWG Low Voltage Directive.

2. ENTRY INTO THE MODULE PROGRAMMING MODE

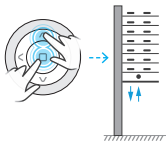
Turn off and turn on the power supply of the **MOBILUS C-MR IP44** module twice, until the connected actuator performs one sequence of micro movements down / up, confirming that the module enters the **PROGRAMMING MODE**.

WARNING! *If within 20 seconds no programming will be performed, the **MOBILUS C-MR IP44** radio module automatically exits from the programming mode. Connected actuator executes one sequence of noticeable and audible micro movements down.*



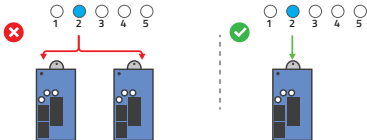
3. LOADING THE MASTER-A * CODE TO THE RECEIVER MEMORY

1. Enter the **MOBILUS C-MR IP44** PROGRAMMING MODE.
2. Press and hold the **STOP** and **UP** buttons simultaneously on the remote control until the connected actuator executes one sequence of noticeable and audible micro movements down / up.
3. The **MASTER-a** code has been loaded into memory and the module goes to the **WORK MODE**. Now, with the **MASTER** remote control, you can operate the units or enter the **PROGRAMMING MODE** to load more remote controls.



WARNING *In the case of a multi-channel remote control select only one channel to be **MASTER**.*

NOTE *For the convenience of programming, it is recommended that each **COSMO | C-MR IP44** module had its own separate **MASTER** (remote control (separate channel for multi-channel remotes). Avoid situations where several **COSMO | C-MR IP44** modules remote controls will have common **MASTER** (shared channel).*



***MASTER** - remote control or channel (in the case of a multi-channel remotes) loaded first into the memory of the **MOBILUS C-MR IP44** module. Allows you to program further remote controls.

4. PROGRAMMING OF THE SECOND AND EVERY OTHER REMOTE CONTROL

1. On the **MASTER** remote control, simultaneously press and hold the **STOP** and **UP** until the connected actuator executes one sequence of noticeable and audible micro movements down / up confirming the entrance of the receiver in the **PROGRAMMING MODE** - Fig. 4a.
2. On the second remote control (for the multi-channel remote control, select the channel you want to program), press and hold both **STOP** and **UP** buttons simultaneously, until the connected actuator performs one sequence of noticeable and audible micro movements down / up. The remote (channel) was loaded into the receiver's memory - Fig. 4b.

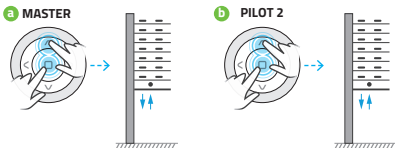
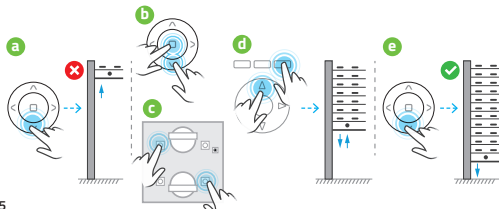


Fig. 4

Repeat step 2 to load the next remote control. If, however, no programming operation is started within 20 seconds, the module automatically returns to operating mode. Return to operating mode can also be performed manually using **MASTER**. In such a situation, press and hold the **STOP** and **UP MASTER** buttons. In both cases, the return to operating mode will be confirmed by a single sequence of micro movements down / up of the connected actuator.

5. CHANGING THE DIRECTION OF THE ACTUATOR

1. If you press the **UP** button on the remote control and the armor goes down, change the direction of rotation of the drive. At the same time, press and hold:
 - a) on the remote control **COSMO** | **HM**, | **HB**, | **G3+**, | **WT9**, | **WT** buttons **STOP** and **DOWN** - Fig. 5b;
 - b) on the remote control **COSMO** | **HT**, | **H24**, | **H1**, | **H5**, | **G**, | **W1**, | **W7** buttons **DOWN** and **UP** - Fig. 5c;
 - c) on the remote control **COSMO** | **HCT UP** and **F3** buttons - Fig. 5d;until the drive executes one sequence of micro down / up moves.
2. Check the **UP** / **DOWN** buttons - Fig. 5e.



rys. 5

6. REMOVAL OF INDIVIDUAL REMOTES (CHANNELS)

It is possible to delete only one of the programmed remotes (not for MASTER remote).

To do this:

1. On the **MASTER**, press simultaneously and hold the **STOP** and **UP** buttons until the connected actuator executes one sequence of noticeable and audible micro movements down / up, confirming the receiver's entrance into the programming mode - Fig. 6a.
2. On the remote control (channel) that you want to delete, press and hold the **STOP** and **UP** buttons simultaneously until the connected actuator performs one sequence of noticeable and audible micro movements down / up, confirming the removal of the pilot code from the actuator memory - Fig. 6b.

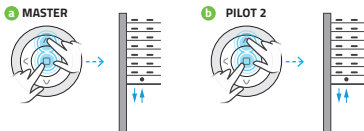


Fig. 6

WARNING! Repeat step 2 to proceed to remove the next remote control. However, if within 20 sec. no programming operation is started, the receiver automatically returns to operating mode. Return to operating mode can also be performed manually using the **MASTER**. In such a situation, simultaneously press and hold the **STOP** and **MASTER** buttons until the connected actuator executes one sequence of noticeable and audible micro movements down / up. In both cases, the return to operating mode will be through one sequence of micro down / top moves of the connected actuator.

7. CONNECTING THE ADDITIONAL SWITCH / DRIVER

1. Connect the **MOBILUS C-MR IP44** module according to the diagram in - Fig. 7.1.
2. Place the **MOBILUS C-MR IP44** module in the shutter box. Use the two protruding handles with holes for assembly.
3. Position the antenna properly (as far as possible from metal parts).
4. Switch on the mains voltage.

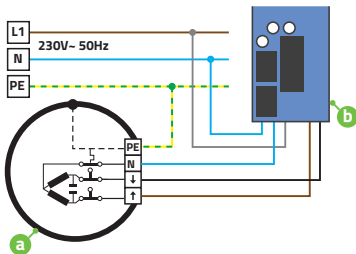


Fig. 7.1

8. REPEATER FUNCTION

SIGNAL REPEATER - This feature allows you to expand the radio control area. The **MOBILUS C-MR IP44** module with the repeater function enabled receives signals from the controller or actuators and passes them forward. Thanks to the furthest located receivers which are not within the controller can receive and transmit information through modules located indirectly. Turn on the repeater function:

1. Press the **STOP** and **UP** buttons simultaneously on the **MASTER** until the connected actuator executes one sequence of noticeable and audible micro movements down / up, confirming entry into the **PROGRAMMING MODE**.
2. On the remote control, press the button sequence: **UP, STOP, DOWN, UP, STOP, DOWN**. Activation of the repeater function will cause three sequences of **DOWN-UP** micro-movements by the actuator.
3. Repeat step 1 to deactivate the repeater function. Then press the button sequence: **UP, STOP, DOWN, UP, STOP, DOWN** - confirmation of deactivation is the execution of two sequences of micro-**DOWN-UP** movements by connected actuator.

WARNING! Turn on the repeater function only on devices that are within range of the signal range. Because of the efficient work, we recommend that you enable the signal repeater function on up to three devices in the facility. Unreasonable inclusion of signal repeater on many devices may cause interference in all radio equipment.

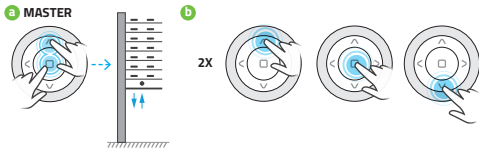


Fig. 8

9. BIDIRECTIONALITY

MOBILUS C-MR IP44 with two-way communication with the remote control allows control of the state of shutter position (eg. open, closed, intermediate level, overload detection). Proper operation of bidirectional communication requires the use of pilots with bidirectional communication.

Remote controls supporting two-way communication: **MOBILUS COSMO | HCT, COSMO | G3+, COSMO | HM, COSMO | HB, COSMO | WT9, COSMO | WT.**

10. BIDIRECTIONAL - INFORMATION ABOUT THE POSITION OF THE BLIND

MOBILUS C-MR IP44 transmits information about the end position and intermediate position blinds to remote controls. The mode is switched on automatically - there is no possibility of deactivation.

11. BI-DIRECTIONAL - OVERLOAD INFORMATION

MOBILUS C-MR IP44 transmits information to remotes about overload - for example, it may be related to a housing lock occurring at the time of raising or lowering. Mode is factory-setted - it is possible to turn off.

Enable / disable of overload detection:

1. At the **MASTER** remote control press and hold the **STOP** and **UP** buttons simultaneously until the connected actuator performs one sequence of noticeable and audible micro movements down / up confirming the receiver input into the programming mode - Fig. 11a.
2. On the **MASTER**, press the **STOP** button and hold until the actuator connected to the **MOBILUS C-MR IP44** module will perform two sequences of noticeable and audible micro movements down / up. Overload detection active - Fig. 11b.
3. To stop the overload detection, repeat step 1. Then press the **STOP** button on the **MASTER** control and hold until the actuator connected to the **MOBILUS C-MR IP44** module will perform 1 sequence of noticeable and audible micro moves down / up - Fig. 11c.

CONTINUED 11. BI-DIRECTIONAL - OVERLOAD INFORMATION

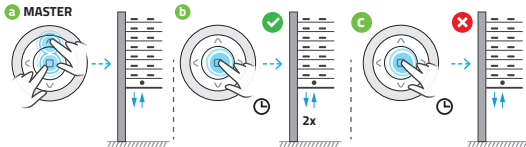


Fig. 11

12. PRODUCT DESCRIPTION



Cable description:

BLUE 1 - neutral;

BLUE 2 - neutral;

GREY L - phase / power;

BLACK L - phase - to the drive;

BROWN L - phase - to the drive;

The drive is connected to one of the blue (common), black and brown wires.

It doesn't matter which blue is feeding and which goes to the engine - they are both connected inside.

13. CONTROL REMOTES - „COSMO” SERIES



COSMO | HCT



COSMO | HB



COSMO | HM



COSMO | G3+



COSMO | WT



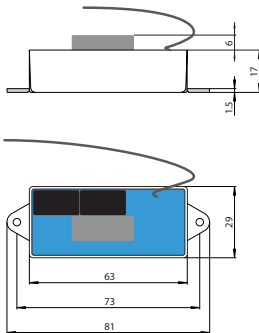
COSMO | WT9



COSMO | LI



COSMO | L5



MOBILUS MOTOR Spółka z o.o.

ul. Miętowa 37, 61-680 Poznań, PL

tel. +48 61 825 81 11, fax +48 61 825 80 52

VAT NO. PL9721078008

W1.1PL, 181128

230 V~ 50 Hz



www.mobilus.pl